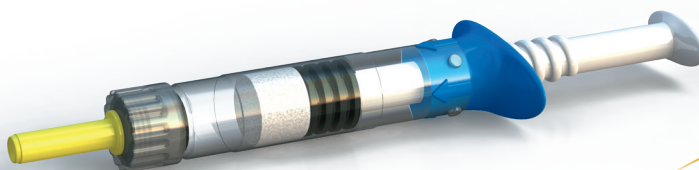


# Instructions for using **GENOTROPIN MiniQuick**<sup>®</sup>



 **Genotropin MiniQuick**<sup>®</sup>  
Growth Hormone Delivery Device containing Genotropin<sup>®</sup>  
Lyophilized Powder (somatropin) for injection

**Important Note:** Please read the **full GENOTROPIN MiniQuick Instructions for Use** before you use your device. **If there is anything you do not understand or cannot do, please call your health care provider or Pfizer Bridge Program<sup>®</sup> at 1-800-645-1280.**

If you have any questions about your dose or your treatment with GENOTROPIN, **please contact your health care provider.**

## INDICATIONS

GENOTROPIN is a prescription product for the treatment of growth failure in children:

- Who do not make enough growth hormone on their own. This condition is called growth hormone deficiency (GHD)
- With a genetic condition called Prader-Willi syndrome (PWS). Growth hormone is not right for all children with PWS. Check with your doctor
- Who were born smaller than most other babies born after the same number of weeks of pregnancy. Some of these babies may not show catch-up growth by age 2 years. This condition is called small for gestational age (SGA)
- With a genetic condition called Turner syndrome (TS)
- With idiopathic short stature (ISS), which means that they are shorter than 98.8% of other children of the same age and sex; they are growing at a rate that is not likely to allow them to reach normal adult height and their growth plates have not closed. Other causes of short height should be ruled out. ISS has no known cause

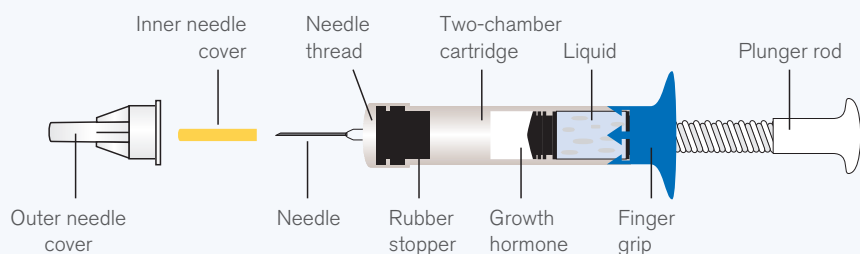
## SELECTED SAFETY INFORMATION

Growth hormone should not be used to increase height in children after the growth plates have closed.

**Please see additional Selected Safety Information throughout and full Prescribing Information in pocket.**

# 1 Getting started and preparing your GENOTROPIN MiniQuick

## Parts of the GENOTROPIN MiniQuick



Before reconstitution, GENOTROPIN MiniQuick can be stored without refrigeration at room temperature (77°F or less) for up to 3 months.

A health care provider may help you with the first injection. He or she can also train you on how to inject GENOTROPIN.

GENOTROPIN cartridges contain m-Cresol and should not be used by patients allergic to it.

### For each injection you will need:

- 2 alcohol pads (not included)
- 1 GENOTROPIN MiniQuick device with the 2-chamber cartridge of GENOTROPIN inside
- 1 injection needle (provided with each device)
- 1 sharps disposal container (not included)

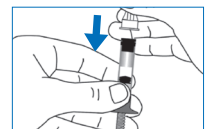
**Wash your hands with soap and water, then follow the steps below.**

### Prepare the Needle



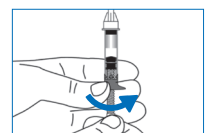
- Wipe rubber stopper with alcohol pad
- Peel seal from back of needle. Leave inner and outer needle covers on

### Attach the Needle



- Attach needle to GENOTROPIN MiniQuick by pushing it straight down and turning it to the right (clockwise) as far as it will go

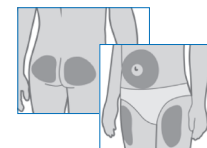
### Mix the Dose



- Hold the GENOTROPIN MiniQuick upright, needle up
- Turn plunger to the right (clockwise) as far as it will go. This mixes your medicine
- **Do not shake** the GENOTROPIN MiniQuick. Shaking may cause the growth hormone to not work as well
- Make sure the solution is clear. If not, **DO NOT INJECT IT**; call 1-800-645-1280

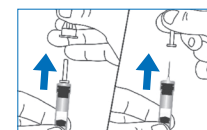
# 2 Using and discarding your GENOTROPIN MiniQuick

## Select Injection Site



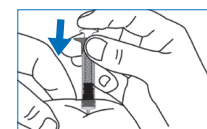
- Choose an injection site. The highlighted areas indicate places where the injection can be given
- Choose a different area each day. This helps keep injection sites from getting sore or lumpy

## Prepare for Injection



- Remove outer needle cover and put it aside
- Remove inner needle cover

## Inject Your GENOTROPIN



- Wipe site with alcohol pad and allow to dry
- Pinch a fold of skin at site, push GENOTROPIN MiniQuick straight into the skin at 90° angle
- Push the plunger rod in all the way. Wait a few seconds, then pull the needle straight out

## Finish Up



- Carefully replace outer needle cover
  - **Do not** throw away the needles and syringes in household trash; dispose of them in an official sharps disposal container or a heavy-duty plastic container that is:
    - Closed with a puncture-resistant, tight-fitting lid that doesn't allow sharps to come out
    - Leak resistant, upright, and stable during use
    - Properly labeled to warn of hazardous waste inside the container
  - Follow your community guidelines for disposing of your full sharps containers. For information about safe disposal in your state, go to the FDA's website at: <http://www.fda.gov/safesharpsdisposal>
  - **Do not** reuse the GENOTROPIN MiniQuick or needles
  - **Do not** recycle your used sharps disposal container
- Important:** Always keep the sharps disposal container out of the reach of children.

## SELECTED SAFETY INFORMATION (continued)

Growth hormone should not be used in patients with diabetes who have certain types of diabetic retinopathy (eye problems).

**Please see Indications on front, additional Selected Safety Information throughout, and full Prescribing Information in pocket.**

 **Genotropin**<sup>®</sup>  
(somatropin) for injection

## THE PFIZER BRIDGE PROGRAM CAN SUPPORT YOU IN SEVERAL WAYS

The Pfizer Bridge Program can support you and your family through treatment. The support includes a dedicated Patient Care Consultant (PCC) who will work directly with your doctor, insurance, and pharmacy to help you get started on GENOTROPIN.



Assist you with the  
**insurance process**



Arrange the **1st  
GENOTROPIN  
shipment** from the  
pharmacy



Arrange **in-home  
device training** by an  
experienced nurse



Help to address  
issues that may  
lead to **pharmacy  
delays** or **treatment  
interruptions**

Contact the Pfizer Bridge Program at **1-800-645-1280**  
PCCs are available 9 AM to 7 PM ET Monday-Friday

### SELECTED SAFETY INFORMATION (continued)

Growth hormone should not be used in patients who have been recently diagnosed with cancer, with cancer, or who are being treated for cancer. Growth hormone deficiency can be caused by brain tumors. So, the presence of these brain tumors should be ruled out before treatment is started. Growth hormone should not be used if it is shown that a previous brain tumor has come back or is getting larger.

Growth hormone should not be used in patients who are critically ill because of surgery, trauma, or respiratory failure.

Growth hormone should not be used in children with Prader-Willi syndrome who are very overweight or have severe breathing problems.

GENOTROPIN should not be used by patients who have had an allergy or bad reaction to somatropin or any of the other ingredients in GENOTROPIN. In the event of an allergic reaction, seek prompt medical attention.

**Please see Indications on front, additional Selected Safety Information throughout,  
and full Prescribing Information in pocket.**