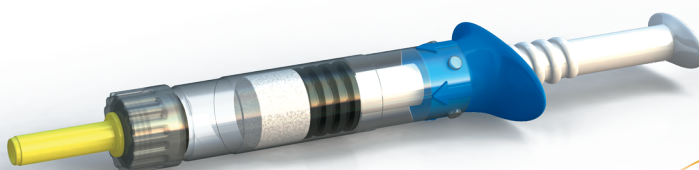


Instructions for using **GENOTROPIN MiniQuick[®]**


*Growth Hormone Delivery Device containing Genotropin[®]
Lyophilized Powder (somatropin) for injection*

Important Note: Please read the **full GENOTROPIN MiniQuick Instructions for Use** before you use your device. **If there is anything you do not understand or cannot do, please call your health care provider or Pfizer Bridge Program[®] at 1-800-645-1280.**

If you have any questions about your dose or your treatment with GENOTROPIN, **please contact your health care provider.**

INDICATIONS

Genotropin (somatropin) is a prescription medicine that contains a form of human growth hormone and is used to treat:

- Children who are not growing because of low or no growth hormone
- Children who are not growing who have Prader-Willi syndrome (PWS)
- Children who were born small for gestational age (SGA) and have not caught-up in growth by age 2
- Children who are not growing and have Turner syndrome
- Idiopathic short stature (ISS)
- Adults who do not make enough growth hormone and have either adult onset or childhood onset growth hormone deficiency

SELECT SAFETY INFORMATION

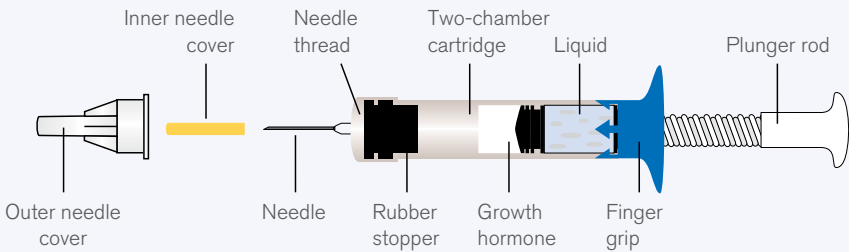
Do not use Genotropin if:

- You have a critical illness caused by certain types of heart or stomach surgery, trauma or breathing (respiratory) problems

Please see additional Important Safety Information throughout and full [Prescribing Information](#) at genotropin.com

1 Getting started and preparing your GENOTROPIN MiniQuick

Parts of the GENOTROPIN MiniQuick



Before reconstitution, GENOTROPIN MiniQuick can be stored without refrigeration at room temperature (77°F or less) for up to 3 months.

A health care provider may help you with the first injection. He or she can also train you on how to inject GENOTROPIN.

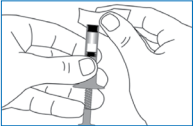
GENOTROPIN cartridges contain m-Cresol and should not be used by patients allergic to it.

For each injection you will need:

- 2 alcohol pads (not included)
- 1 GENOTROPIN MiniQuick device with the 2-chamber cartridge of GENOTROPIN inside
- 1 injection needle (provided with each device)
- 1 sharps disposal container (not included)

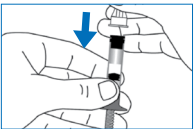
Wash your hands with soap and water, then follow the steps below.

1.1 Prepare the Needle



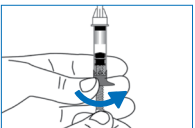
- Wipe rubber stopper with alcohol pad
- Peel seal from back of needle. Leave inner and outer needle covers on

1.2 Attach the Needle



- Attach needle to GENOTROPIN MiniQuick by pushing it straight down and turning it to the right (clockwise) as far as it will go
- Make sure the needle is placed directly over the rubber stopper (not at an angle), before screwing the needle onto the rubber stopper of the GENOTROPIN MINIQUICK

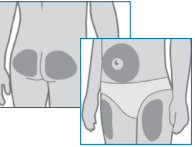
1.3 Mix the Dose



- Hold the GENOTROPIN MiniQuick upright, needle up
- Turn plunger to the right (clockwise) as far as it will go. This mixes your medicine
- **Do not shake** the GENOTROPIN MiniQuick. Shaking may cause the growth hormone to not work as well
- Make sure the solution is clear. If not, **DO NOT INJECT IT**; call 1-800-645-1280

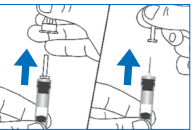
2 Using and discarding your GENOTROPIN MiniQuick

2.1 Select Injection Site



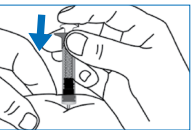
- Choose an injection site (thigh, buttocks, or abdomen) as recommended by your healthcare provider
- Choose a different site each time you give yourself an injection. Each new injection should be at least 1 inch from the site you used before. Avoid areas that are bony, bruised, red, sore or hard. You should also avoid areas that have scars or skin problems

2.2 Prepare for Injection



- Remove outer needle cover and put it aside
- Remove inner needle cover

2.3 Inject Your GENOTROPIN



- Wipe site with alcohol pad and allow to dry
- Pinch a fold of skin at site, push GENOTROPIN MiniQuick straight into the skin at 90° angle
- Push the plunger rod in as far as it will go, to inject all of the medicine in the GENOTROPIN MINIQUICK into the fold of skin

2.4 Finish Up



1. Carefully replace outer needle cover
2. **Do not** reuse the GENOTROPIN MiniQuick or needles

2.5 Disposal of Used Needle

- Throw the needle away in an official sharps disposal container or a heavy-duty plastic container that is:
 - Closed with a puncture-resistant, tight-fitting lid that doesn't allow sharps to come out
 - Leak resistant, upright, and stable during use
 - Properly labeled to warn of hazardous waste inside the container
- **Important:** Always keep the sharps disposal container out of the reach of children
- **Do not** throw needles away in household trash
- Follow your community guidelines for disposing of your full sharps containers. For information about safe disposal in your state, go to the FDA's website at: www.fda.gov/safesharpsdisposal

THE PFIZER BRIDGE PROGRAM® CAN SUPPORT YOU IN SEVERAL WAYS

If your doctor has prescribed GENOTROPIN, the Pfizer Bridge Program can support you and your family through treatment.

The support includes a dedicated Patient Care Consultant (PCC) who will work directly with your doctor, insurance, and pharmacy to help you get started on GENOTROPIN as soon as possible.

Contact the Pfizer Bridge Program at **1-800-645-1280**



Assist you with the insurance process



Arrange the **1st GENOTROPIN shipment** from the pharmacy



Arrange for device **training education** with an experienced nurse



Address issues that may lead to **pharmacy delays** or **treatment interruptions**

Click here to enroll in the **GENOTROPIN** Copay Program.

SELECT SAFETY INFORMATION (continued)

Do not use Genotropin if: (continued)

- You are a child with Prader-Willi syndrome who is severely obese or has breathing problems including sleep apnea
- You have cancer or other tumors
- You are allergic to somatropin or any of the ingredients in Genotropin
- You have certain types of eye problems caused by diabetes (diabetic retinopathy)
- You are a child with closed bone growth plates (epiphyses)

Before using Genotropin, tell your healthcare provider about all of your medical conditions, including if you:

- Have had heart or stomach surgery, trauma or serious breathing (respiratory) problems
- Have had a history of problems breathing while you sleep (sleep apnea)
- Have or have had cancer or any tumor
- Have diabetes
- Have ear problems
- Are pregnant or breastfeeding, or plan to become pregnant or breastfeed

Please see additional Important Safety Information throughout and full [Prescribing Information](#) at genotropin.com

 **Genotropin**®
(somatropin) for injection

SELECT SAFETY INFORMATION (continued)

Tell your healthcare provider about all the medicines you take, including prescription and over-the counter medicines, vitamins, and herbal supplements. Genotropin may affect how other medicines work, and other medicines may affect how Genotropin works.

Genotropin may cause serious side effects, including:

- Higher risk of death in people who have critical illnesses because of heart or stomach surgery, trauma or serious breathing (respiratory) problems
- Risk of sudden death in children with Prader-Willi syndrome who are severely obese or have breathing problems including sleep apnea
- Increased risk of the return of cancer or a tumor in people who were treated with radiation to the brain or head as children and who developed low growth hormone problems. Your healthcare provider will need to monitor you for a return of cancer or a tumor
- New or worsening high blood sugar (hyperglycemia) or diabetes. Your blood sugar may need to be monitored during treatment
- Increase in pressure in the skull. If you have headaches, eye problems, nausea or vomiting, contact your healthcare provider
- Serious allergic reactions. Get medical help right away if you have the following symptoms: swelling of your face, lips, mouth or tongue, trouble breathing, wheezing, severe itching, skin rashes, redness or swelling, dizziness or fainting, fast heartbeat or pounding in your chest, or sweating
- Your body holding too much fluid (fluid retention) such as swelling in the hands and feet, pain in your joints or muscles or nerve problems that cause pain, burning, or tingling in the hands, arms, legs and feet. Tell your healthcare provider if you have any of these signs or symptoms of fluid retention
- Decrease in a hormone called cortisol. Tell your healthcare provider if you have darkening of the skin, severe fatigue, dizziness, weakness or weight loss
- Decrease in thyroid hormone levels. Decreased thyroid hormone levels may affect how well Genotropin works. Your healthcare provider will do blood tests to check your hormone levels
- Hip and knee pain or a limp in children (slipped capital femoral epiphysis). This may lead to a serious condition where bone tissue dies due to a lack of blood supply (osteonecrosis). Get medical help right away if you develop a limp or has hip or knee pain
- Worsening of pre-existing curvature of the spine (scoliosis). If you have scoliosis, you will need to be checked often for an increase in the curve of the spine
- Increased risk of ear and hearing problems and heart problems if you have Turner syndrome
- Loss of fat and tissue weakness in the area of skin you inject
- Increase in phosphorus, alkaline phosphatase, and parathyroid hormone levels in your blood
- Severe and constant abdominal pain. This could be a sign of pancreatitis. Tell your healthcare provider if you have any new abdominal pain

Other common side effects of Genotropin include:

- Injection site reactions and rashes, loss of fat and tissue weakness, and headaches

You are encouraged to report negative side effects of prescription drugs to the FDA. Visit www.fda.gov/medwatch or call 1-800-FDA-1088.

Please see full [Prescribing Information](#) at genotropin.com